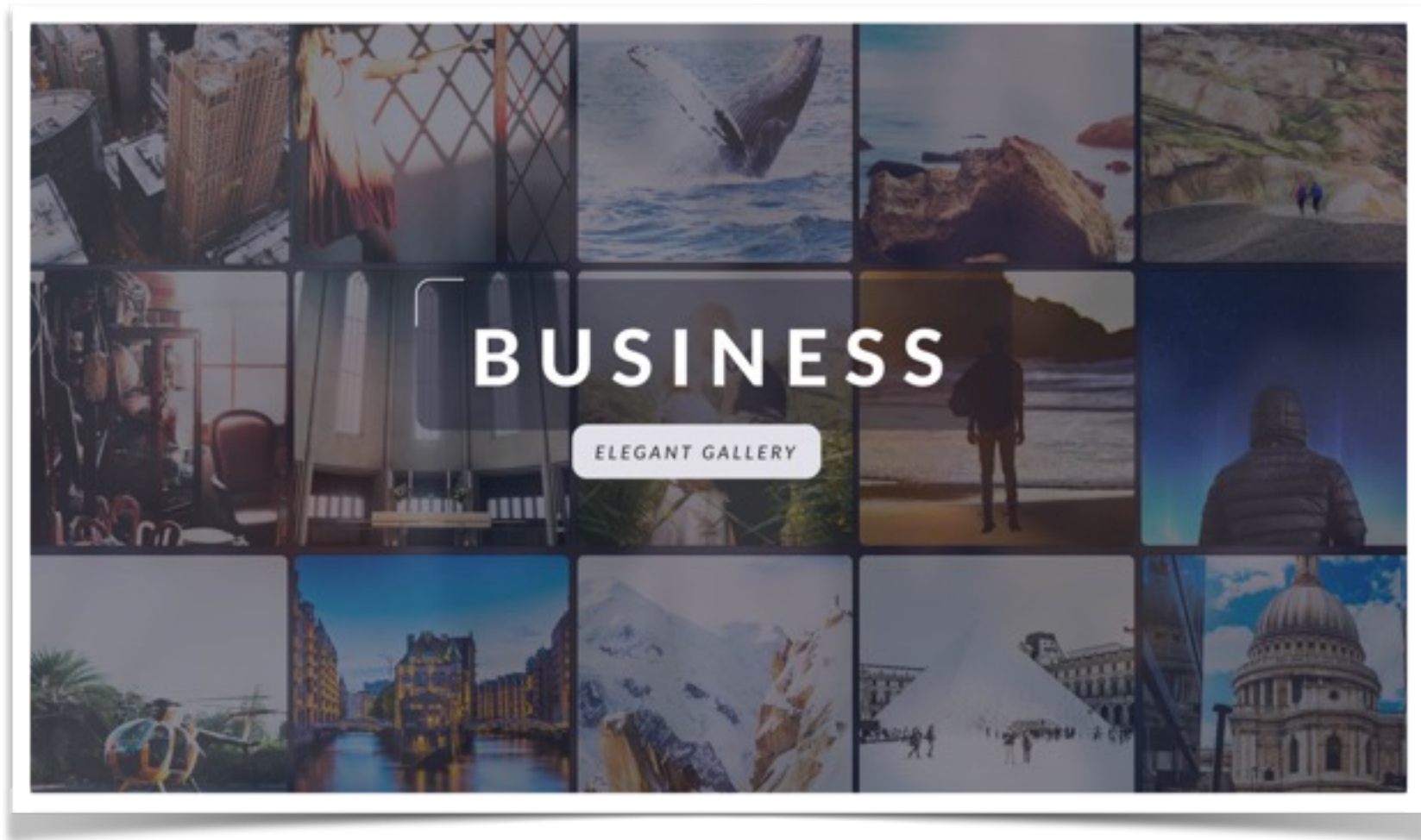


## Business // Elegant Gallery

by heyalisa



If you have questions please contact me here <http://videohive.net/user/heyalisa>.

Install Fonts

*Please notice - for best use of this template you should download these fonts. It is free for personal and commercial use*

Lato - <http://www.latofonts.com/lato-free-fonts/>

If you have questions please contact me here <http://videohive.net/user/heyalisa>.

## Project Structure

Clean Step by Step structure -  
follow Folder Numbers

**00 Assets** - Import your video, sound and  
other footage here

**01 Modify Logo** - Put your logo inside  
composition LOGO

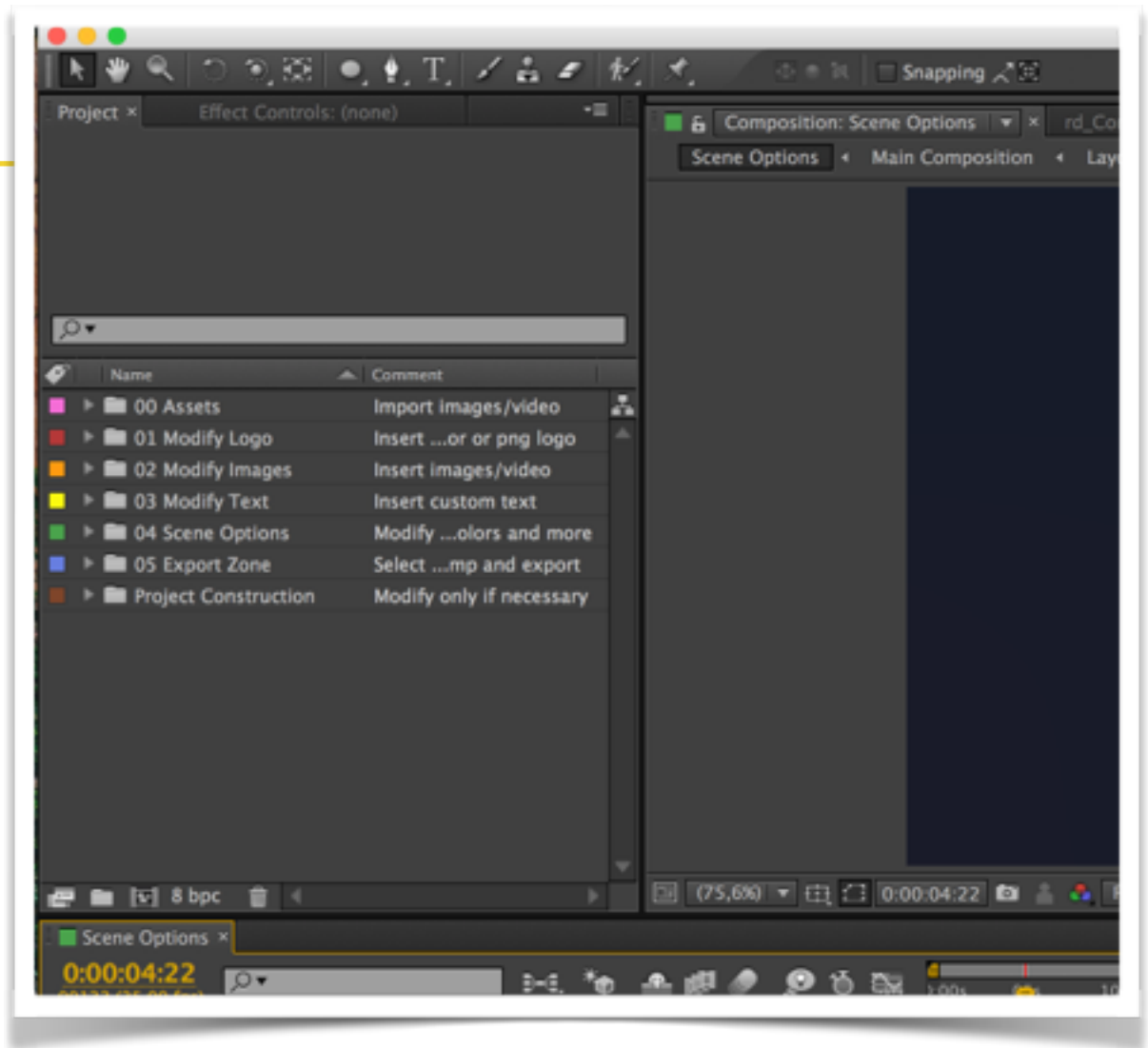
**02 Modify Image/Video** - Insert your  
footages here

**03 Modify Text** - Open folder and edit ll text  
compositions

**04 Scene Options** - Open Scene Options  
comp adjust Settings

**05 Export Zone** - Chose Resolution Full HD  
(1920 X 1080) or HD (1280X720)

**Project Structure** - This folder is for  
technical stuff, not necessary to edit

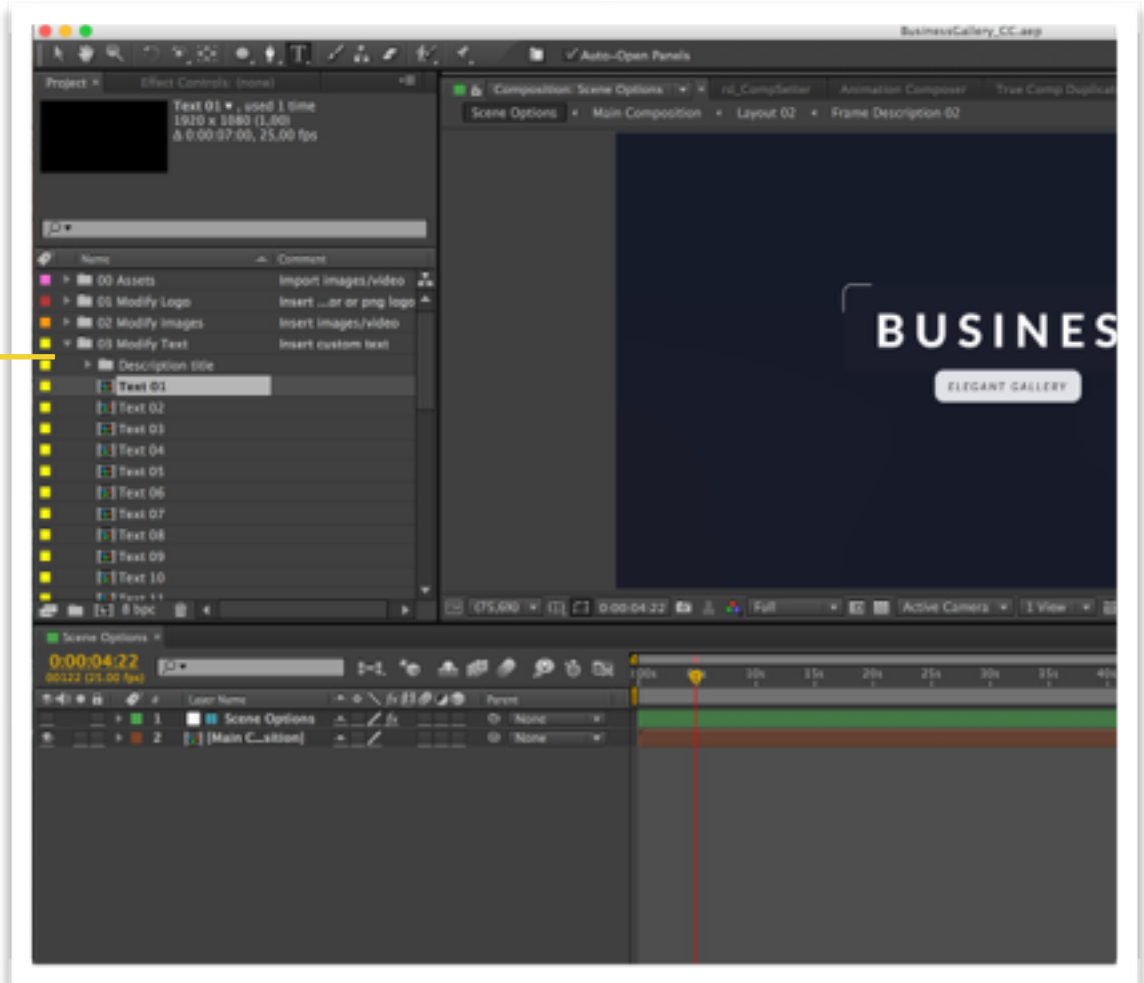


If you have questions please contact me here <http://videohive.net/user/heyalisa>.

## Modify Text

1

Open all Text Compositions



If you have questions please contact me here <http://videohive.net/user/heyalisa>.

Use Text Tool for editing text layers

2

Use Character panel for adjust settings

4

Edit Text

3

Select Text layer

1



If you have questions please contact me here <http://videohive.net/user/heyalisa>.

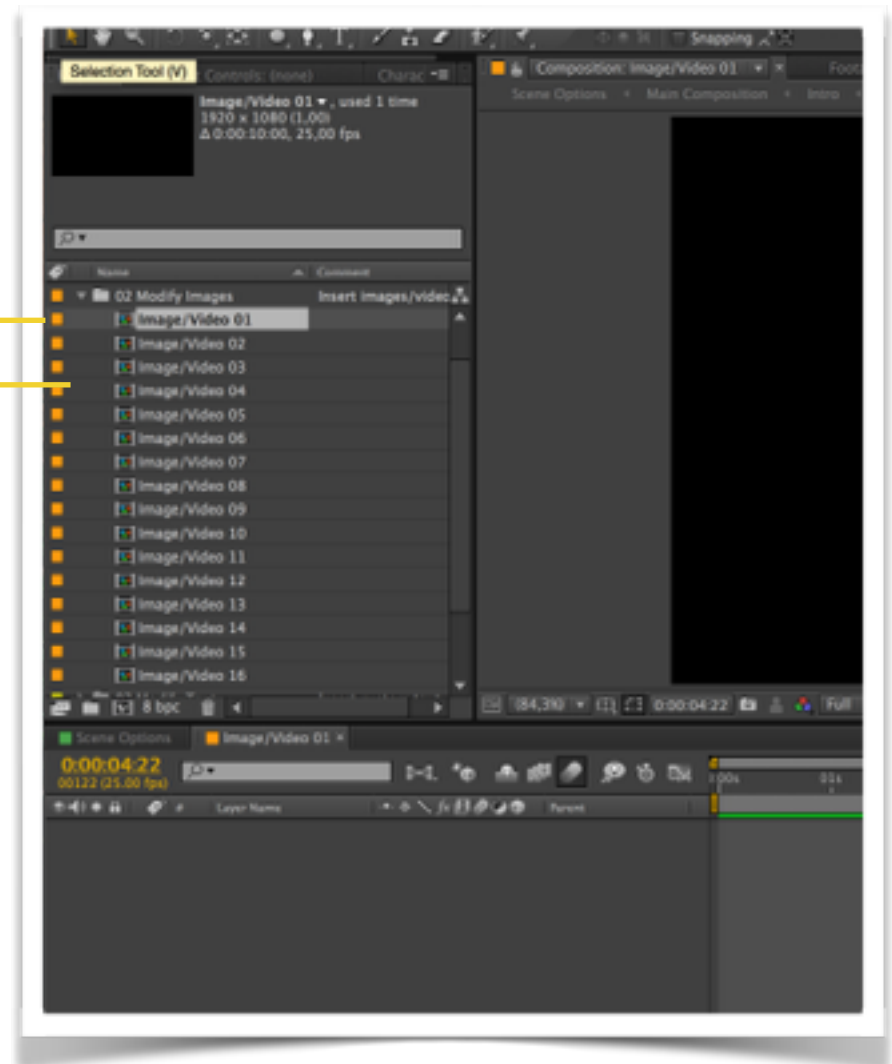
## Modify Images/Video

Import your footage - File - Import -  
File.. (Command/Ctrl + I)

1

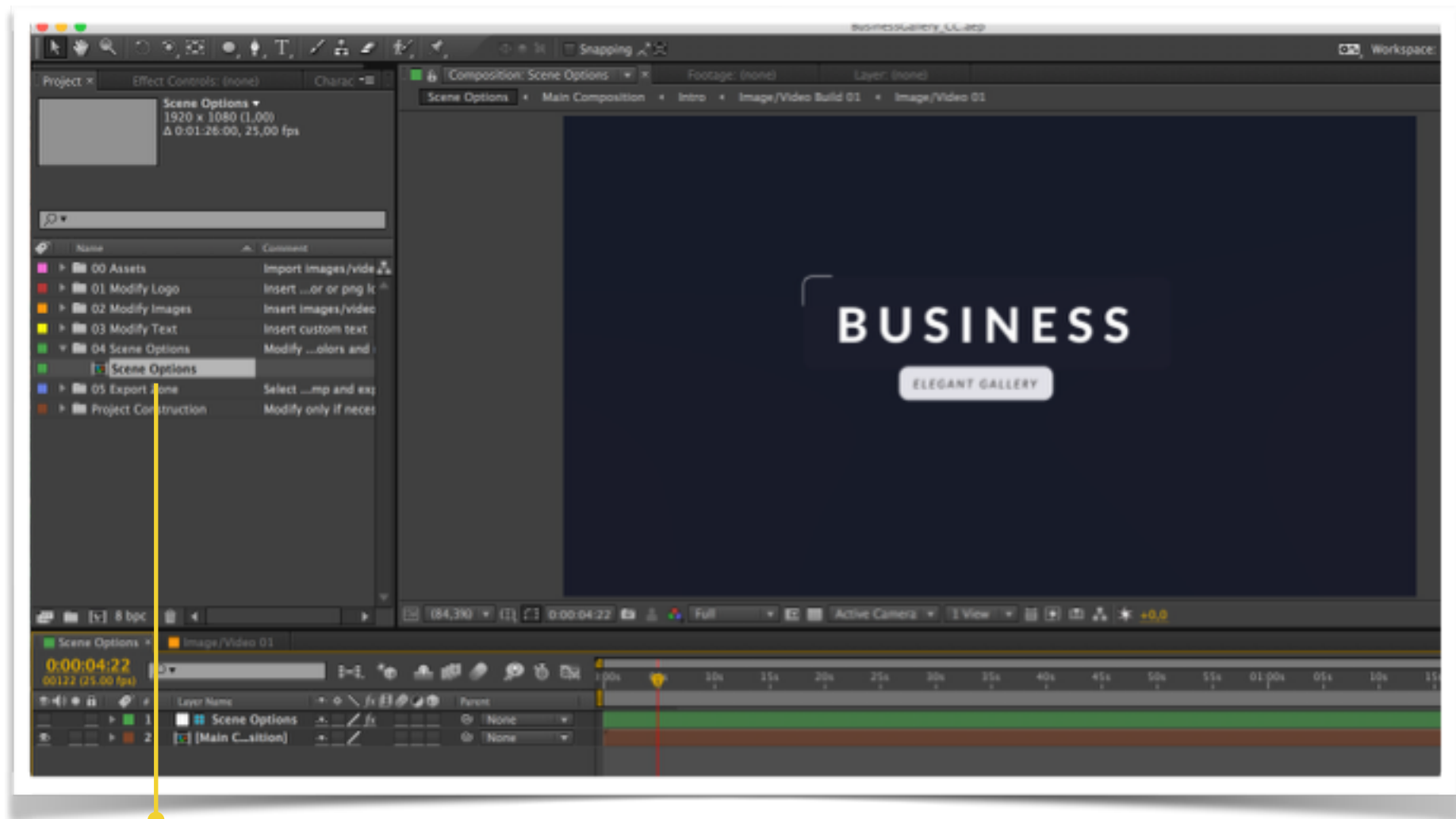
2

Open Image/Video  
compositions and insert your  
footage



If you have questions please contact me here <http://videohive.net/user/heyalisa>.

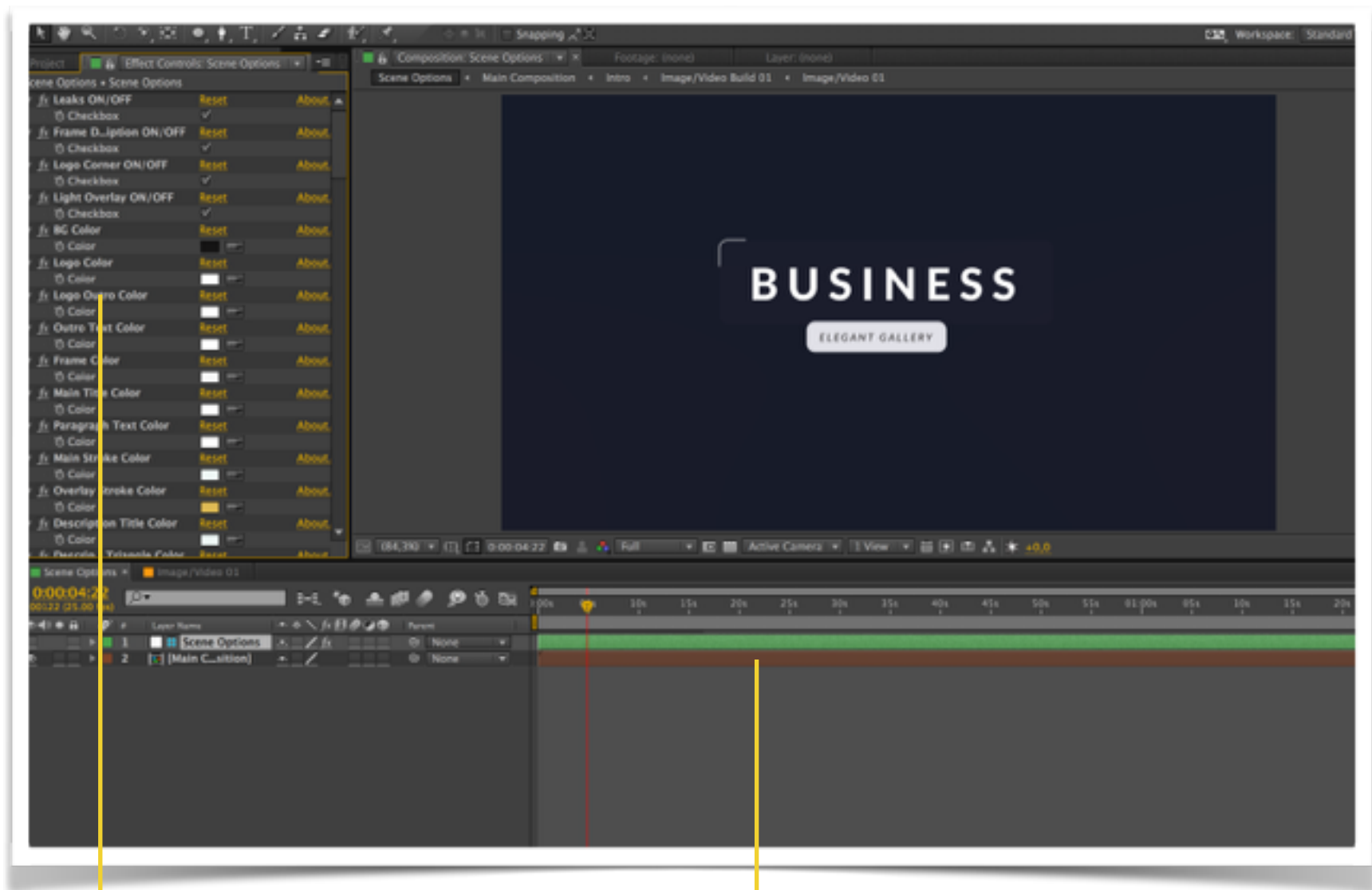
## Scene Options



1

Open Scene Options comp

If you have questions please contact me here <http://videohive.net/user/heyalisa>.



2

Change Settings

1

Select Scene Options Layer

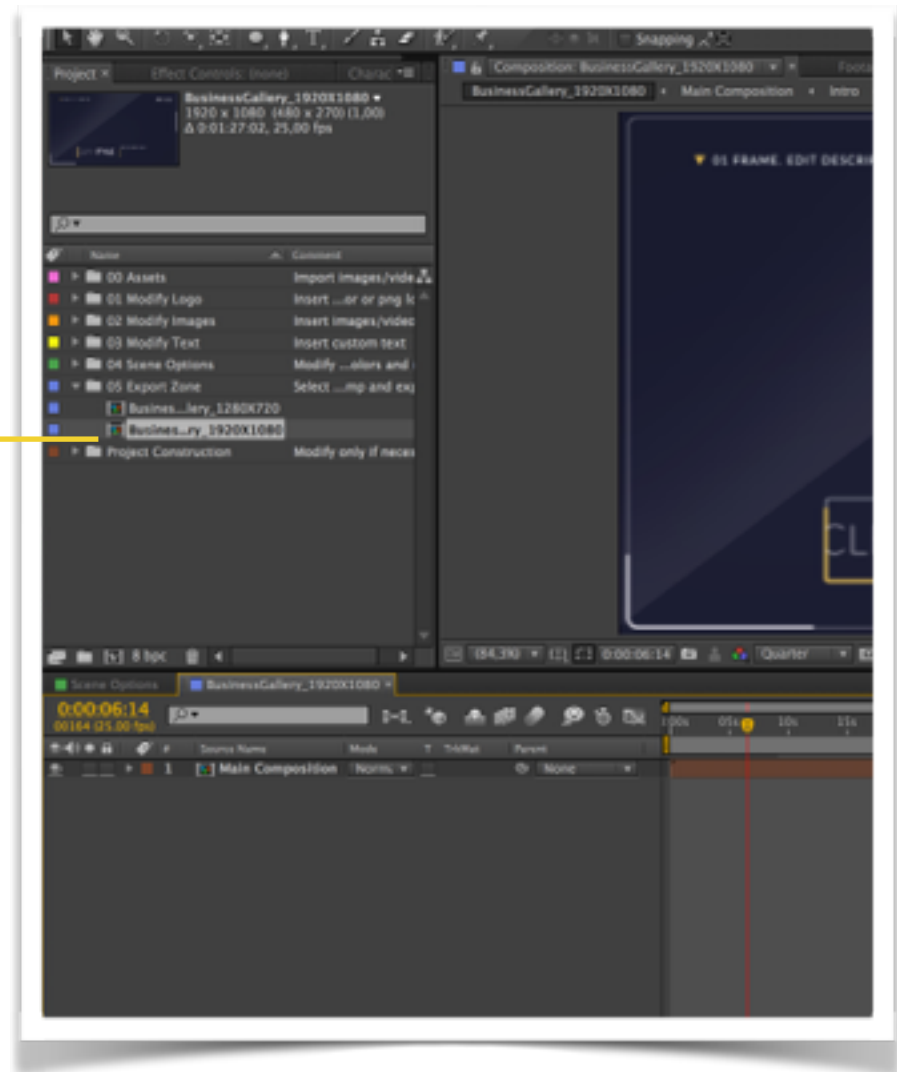
If you have questions please contact me here <http://videohive.net/user/heyalisa>.



Render

Choose Resolution and Open appropriate composition for Render

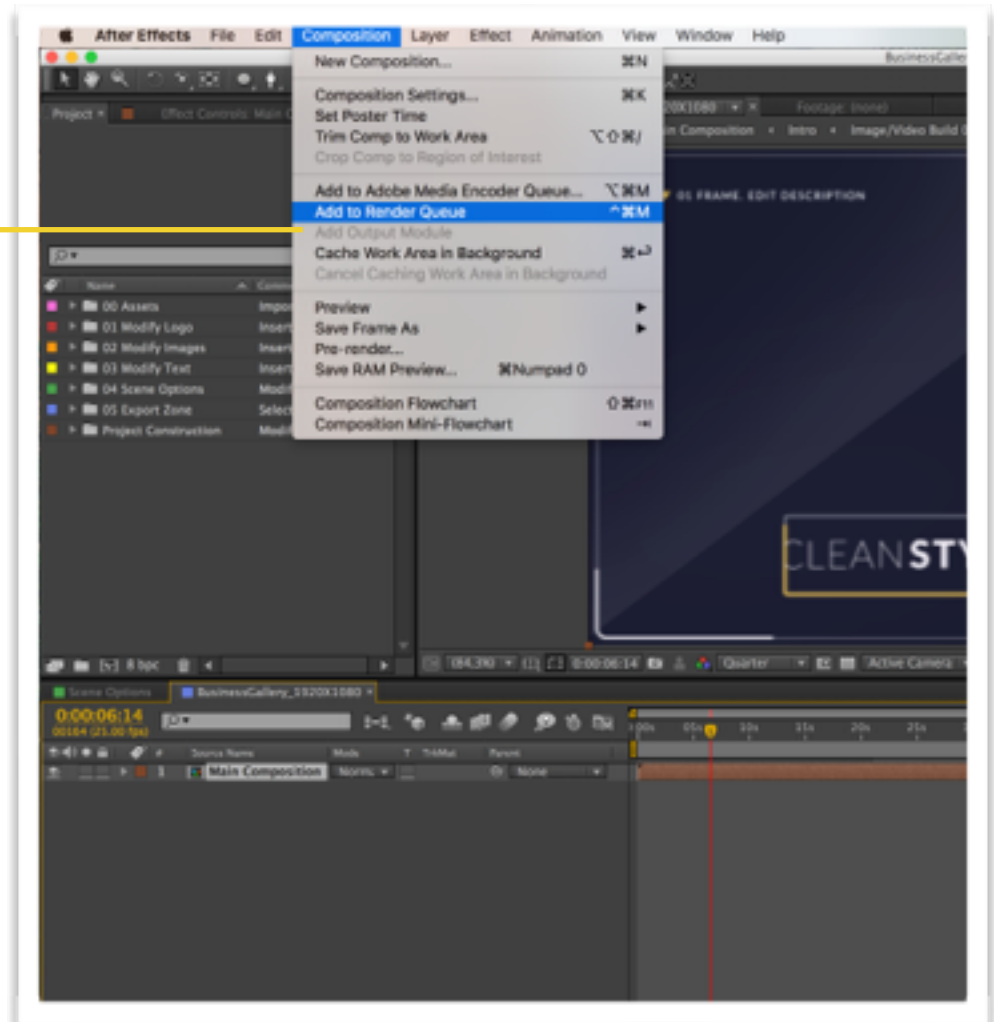
1



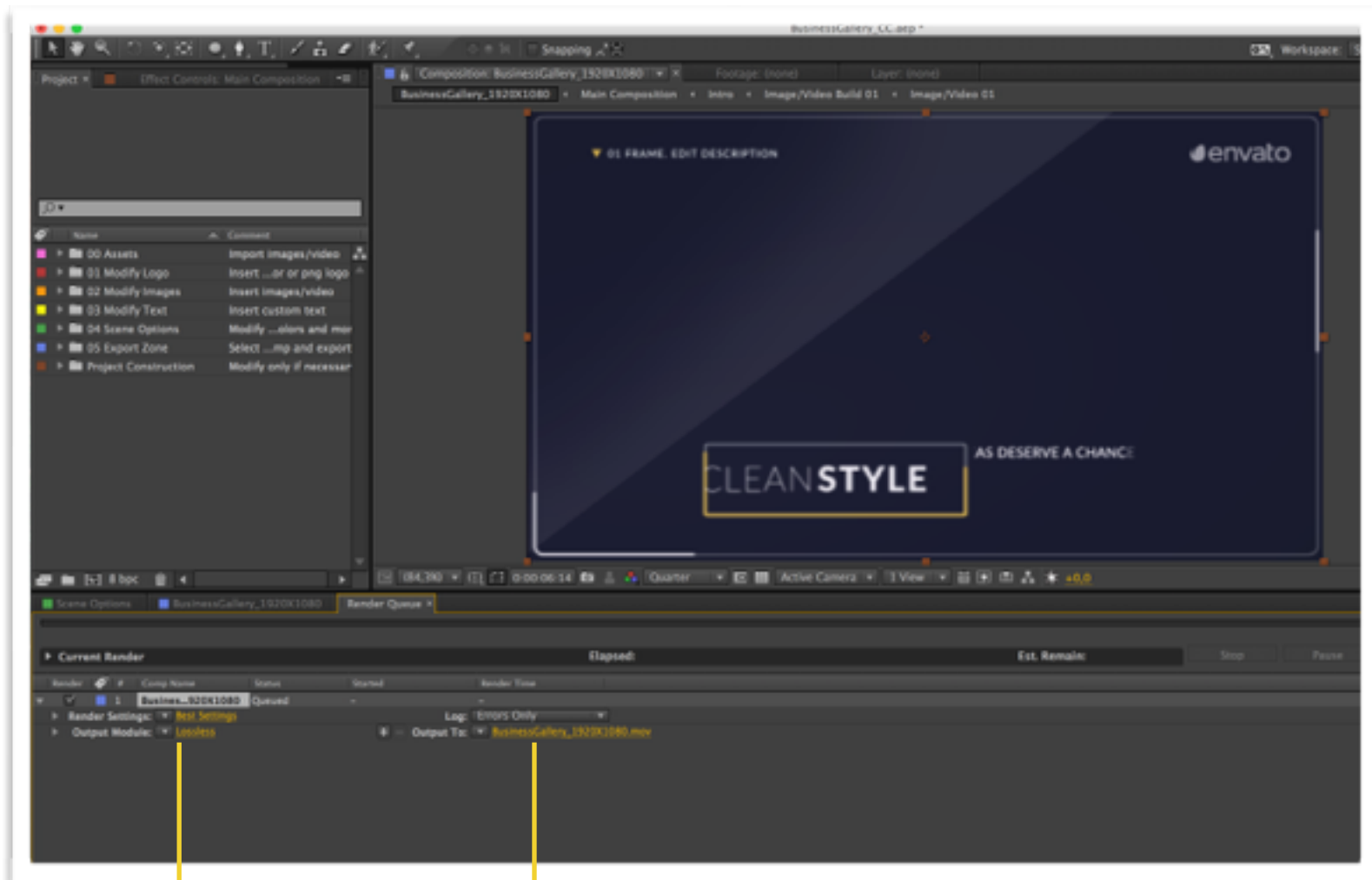
If you have questions please contact me here <http://videohive.net/user/heyalisa>.

Go to Composition - Add to  
Render Queue

1



If you have questions please contact me here <http://videohive.net/user/heyalisa>.



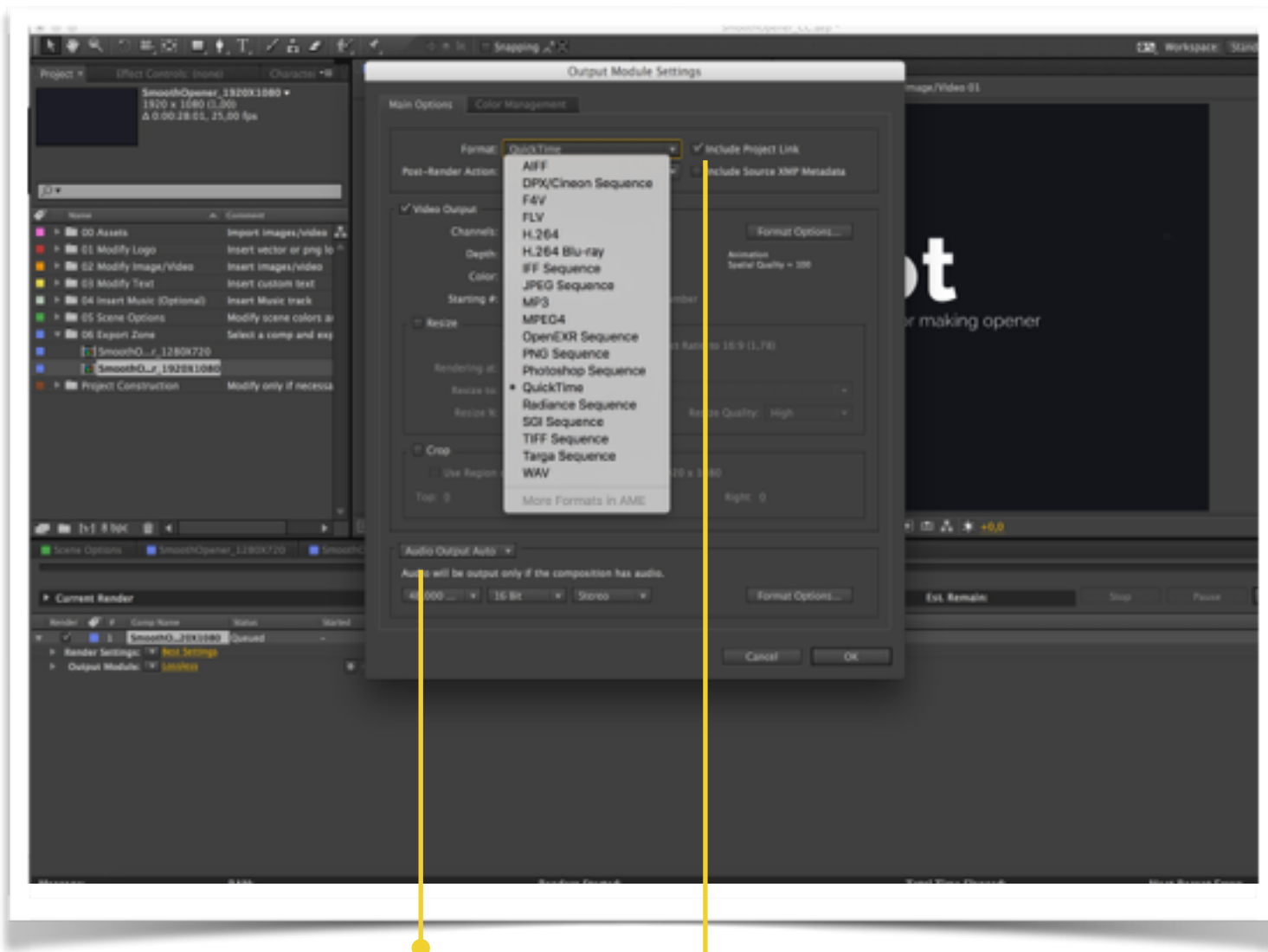
1

Click here to adjust final settings

2

Click here to choose place for your final video

If you have questions please contact me here <http://videohive.net/user/heyalisa>.



2

Select Audio Output On if you want to Render your video with soundtrack

1

Choose Format here

If you have questions please contact me here <http://videohive.net/user/heyalisa>.

# Thanks for choosing my template

please leave rating if you like it!



If you have questions please contact me here <http://videohive.net/user/heyalisa>.